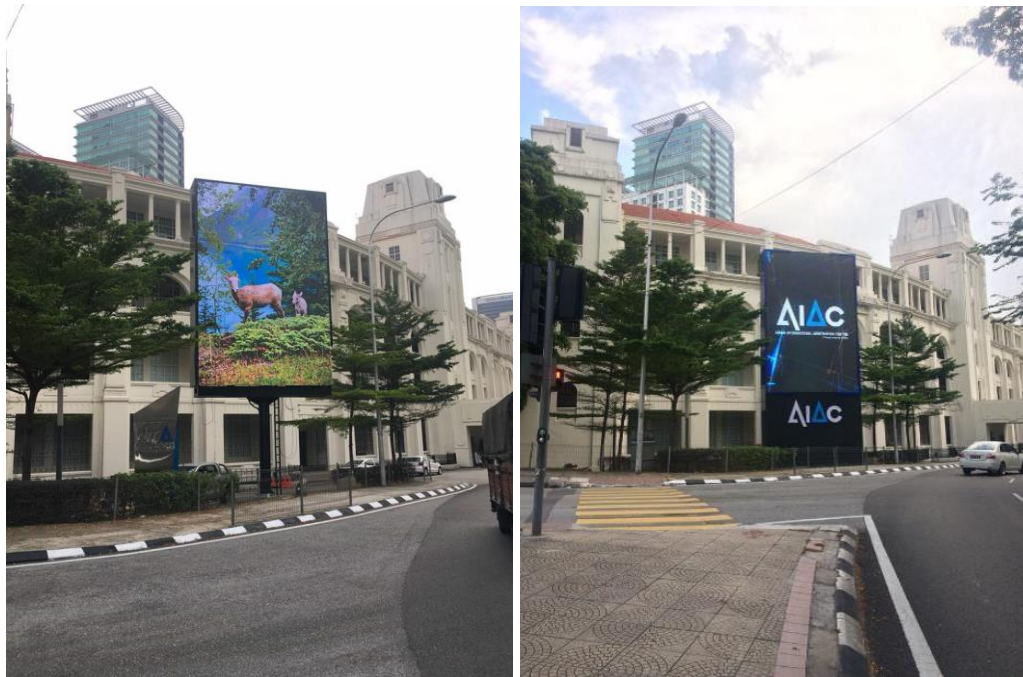


Outdoor P5 SMD LED Video Display



LEDtronics LED-P5 SMD Q series LED Video Displays offer high-definition video quality with a 5mm visual resolution. Suitable for outdoor applications and is your ideal out-of-home digital display solution for delivering corporate communications, enhance company's reputation and their brand names.

Simply put, LEDtronics P5 SMD Q series brings world-class technology that will capture more audience attention with enhanced features such as higher brightness, higher resolution, excellent color uniformity, picture-perfect clarity, wide viewing angle and higher refresh rates.

LEDtronics is a leading LED display specialist in Malaysia. Every day, many Malaysia's respected brands, small businesses, non-profits, government institutions, universities, shopping malls, media owners and a whole lot more depend on LEDtronics for their visual communication and digital display solutions.

Efficient, effective and reliable. Since 1997.

Product Features

SMD (3-in-1) LED Packages

Red, green and blue LEDs are blended within a single package to reduce the necessary viewing distance.

High-Density Layout

With higher resolution of the number of full-color pixels within a screen area hence delivers true full-color lines and columns across the display.

Weather Resistant Design

P5 SMD panels boast an IP-65 environmental rating to protect against wind-driven rain and dust.

Advanced Video Processing

LEDtronics 16-bit image processing provides 281 trillion colors capability at any brightness setting.

Video Control System

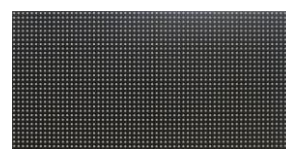
Equipped with video processor that supports SDI/HDSI input and video switcher that allows multiple input switches.

Any Shape, Any Size

Module-based design allows for unique shapes and aspect ratios while eliminating all limitations on display size.

Technical Specifications

Model number	P5-Q
Pixel pitch (mm)	5
Pixels per square meter	40,000
Color Processing Architecture	16-bit
Pixel configuration	RGB 3-in-1 SMD2525 (Black)
Color capability	281 trillion +
Color temperature	3,500° - 9,500° K (adjustable)
Refresh rate	>1,920+ Hz
LED lifetime	100,000 hours
Display intensity	4,500 nits (cd/m2) adjustable
Dimming capability	8-bit (256 levels of brightness control)
Horizontal viewing angle	140°
Vertical viewing angle	130°
Contrast ratio	1,000:1 +
Service access	Rear
Cabinet construction	Steel iron
Weatherproofing features	Sealed cabinet, potted modules, conformal coated display electronics
Weatherproofing (front/rear)	IP65 / IP54
Working temperature rating	-34°C to 49°C
Ventilation	Fans and filters
Video frame rate	60 frames per second
Video compatibility	PAL, NTSC, HDTV
Video format	Composite, component, S-Video, SDI, HD-SDI
Data transmission to display	UTP Cat 5 up to 100m / fiber optic cable
Minimum viewing distance	5 m
Module configuration-pixels (WxH)	64 x 32
Module dimensions (WxH)	320 mm x 160 mm
Panel configuration-pixels (WxH)	192 x 192
Panel dimensions (WxH)	960 mm x 960 mm
Panel depth	175 mm
Panel weight (kg)	63
Maximum power per sq.m. (watts)	684
Average power per sq.m. (watts)	228
Video Processor	LEDtronics Video processor
Operating System	Windows 10



Module: Front and Rear View



Panel: Side View



AIAC, Jalan Sultan Sulaiman